



MACCHINE DA CAFFE' AUTOMATICA AUTOMATIC COFFEE MACHINES

DE LONGHI ECAM23.210

DE LONGHI ECAM21.210

(INT/CH/IT)

DATI TECNICI / TECHNICAL DATA / TECHNISCHE DATEN DONNEES TECHNIQUES / DATOS TECNICOS

Voltaggio / Voltage / Spannung / Voltage / Voltaje V / Hz 220 - 240 / 50 - 60

Max. potenza assorbita / Max. input power W 1450

SEZIONE CAFFE' / COFFEE SECTION

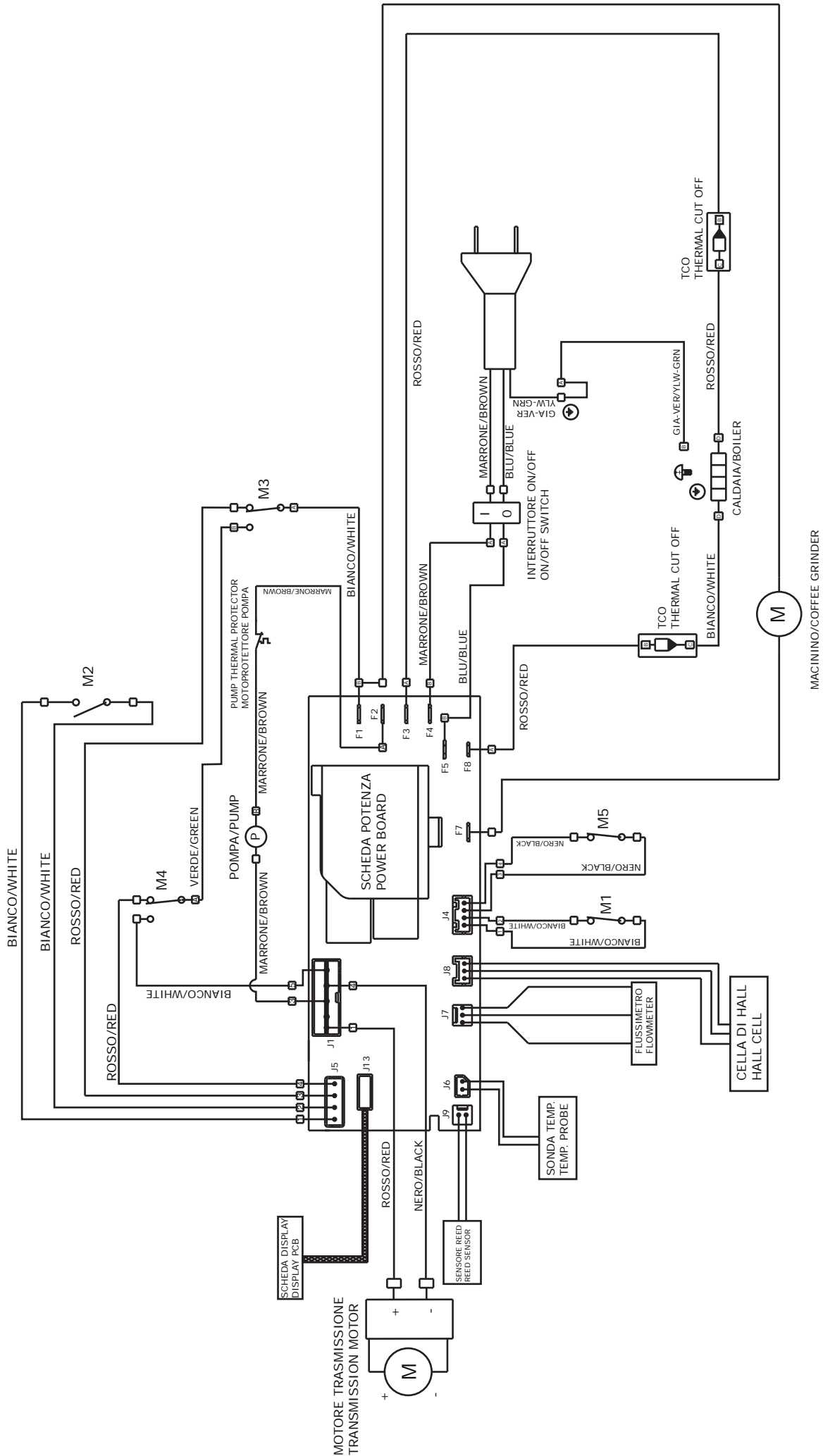
Sonda termica / Temperature probe °C 98 (Caffè / Acqua calda)
(Coffee / Hot water)

Fusibile termico TCO / Thermal fuseTCO °C 192

Resistenza riscaldamento W 1400

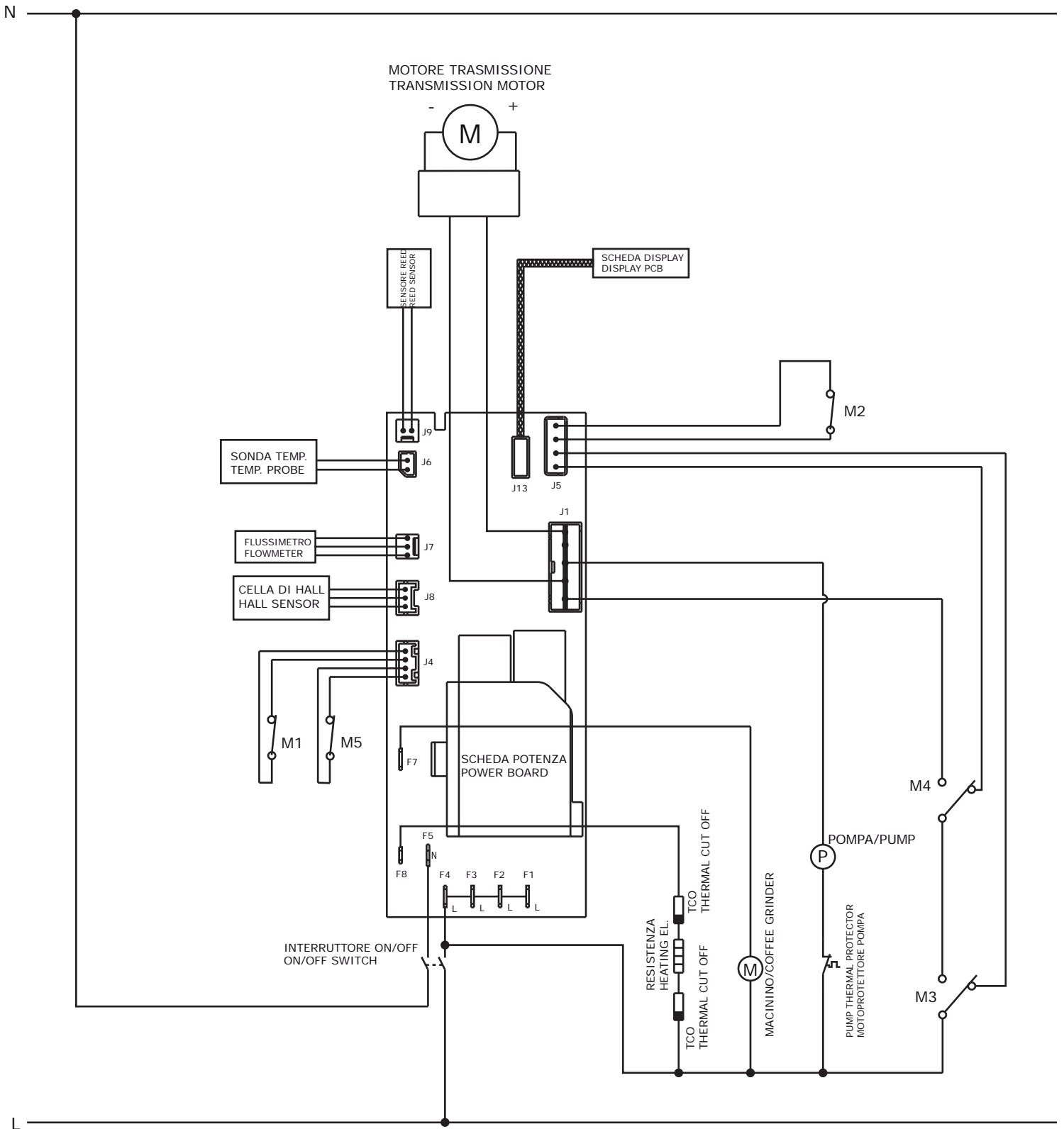
Pompa / Pump TYPE / W ULKA EP5W / 48

SCHEMA ELETTRICO / ELECTRICAL DIAGRAM

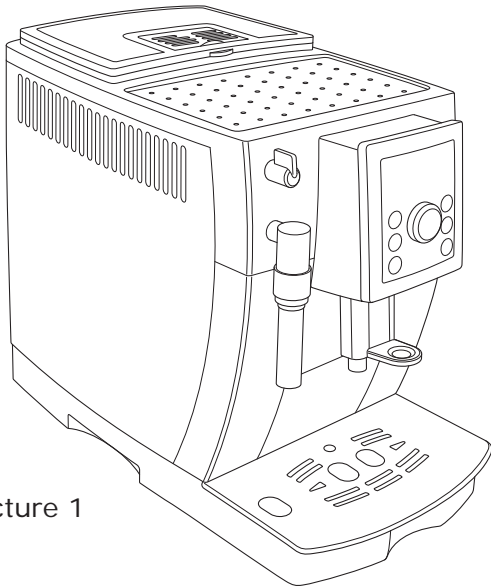


LEGENDA MICRO / MICROSWITCHES	
M1	Infusore alto / Infuser top position
M2	Infusore basso / Infuser bottom position
M3	Cassetto fondi / Coffee grounds container
M4	Tanica / Tank
M5	Rubinetto / Tap

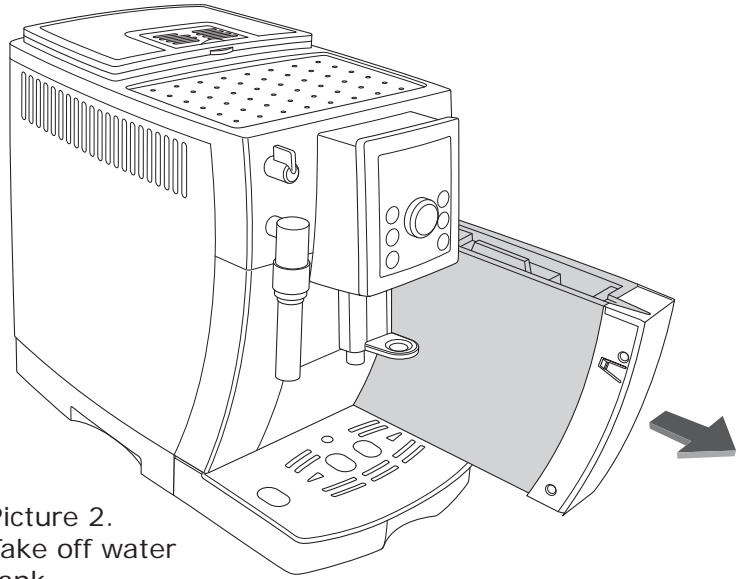
SCHEMA ELETTRICO / ELECTRICAL DIAGRAM



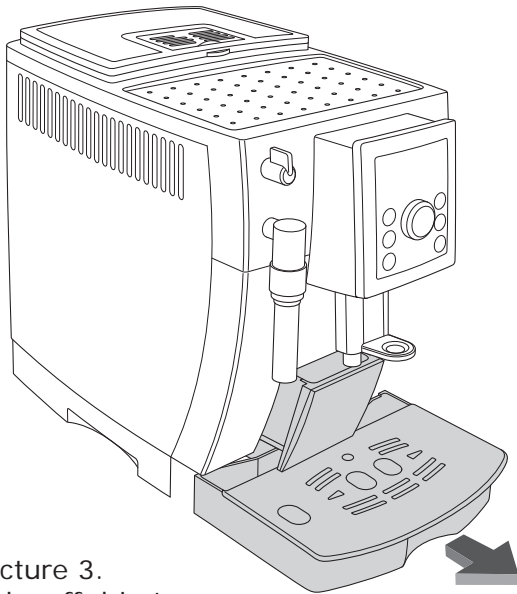
ACCESSIBILITY



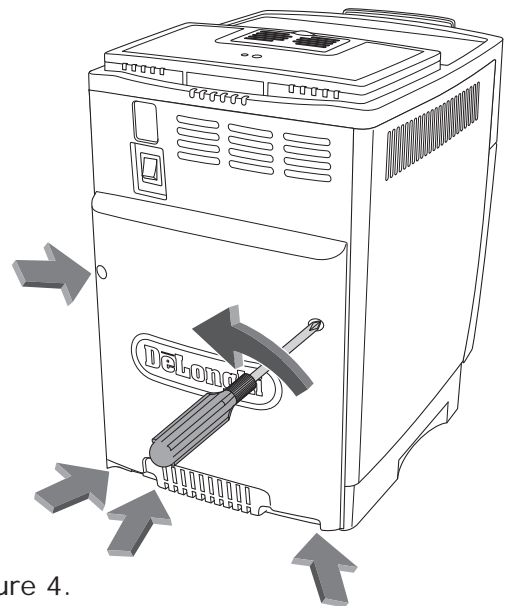
Picture 1



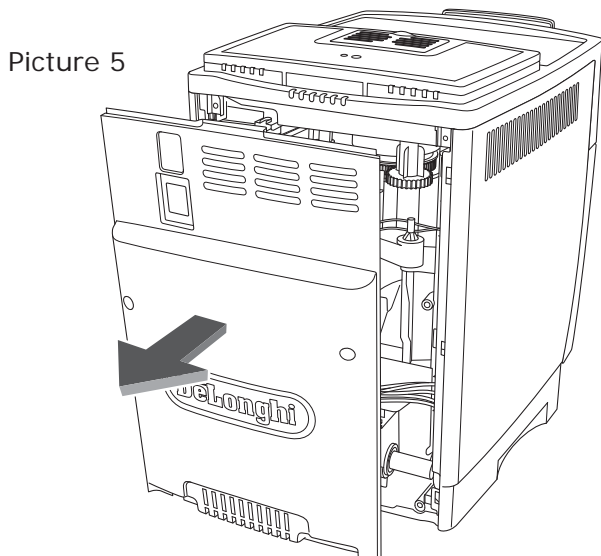
Picture 2.
Take off water tank



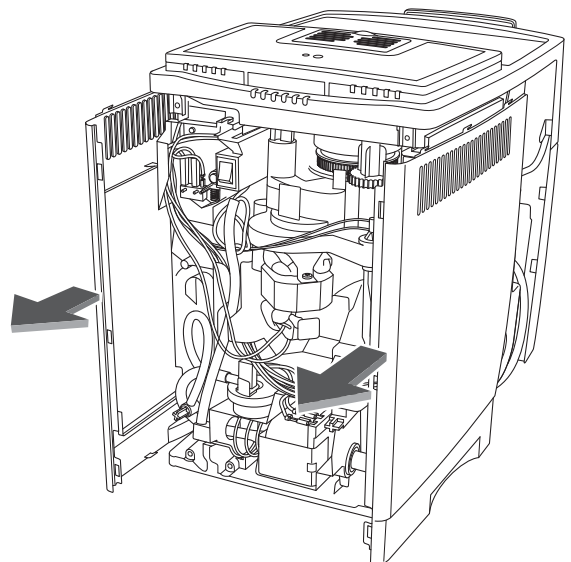
Picture 3.
Take off drip tray
and waste container



Picture 4.
Unscrew the 5 indicated screws
(Torx T20)

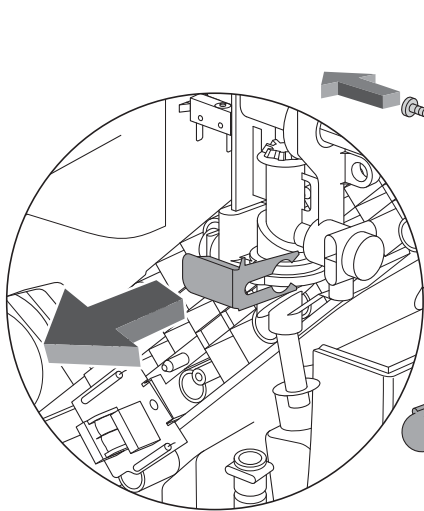


5.1 Remove back panel

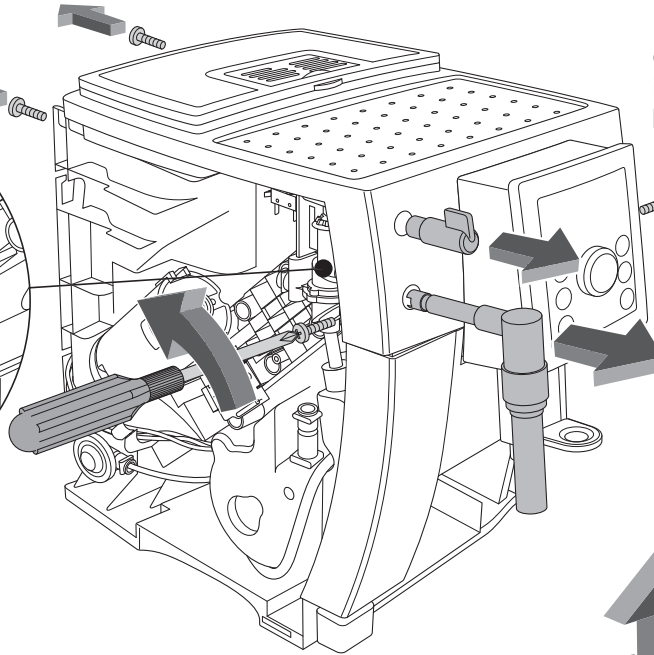


5.2 Unhook side panels

Picture 6 - TO REMOVE CONTROL PANEL



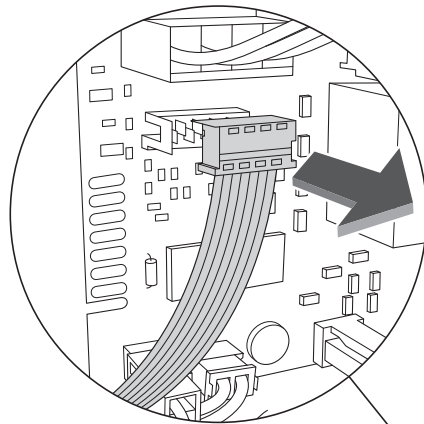
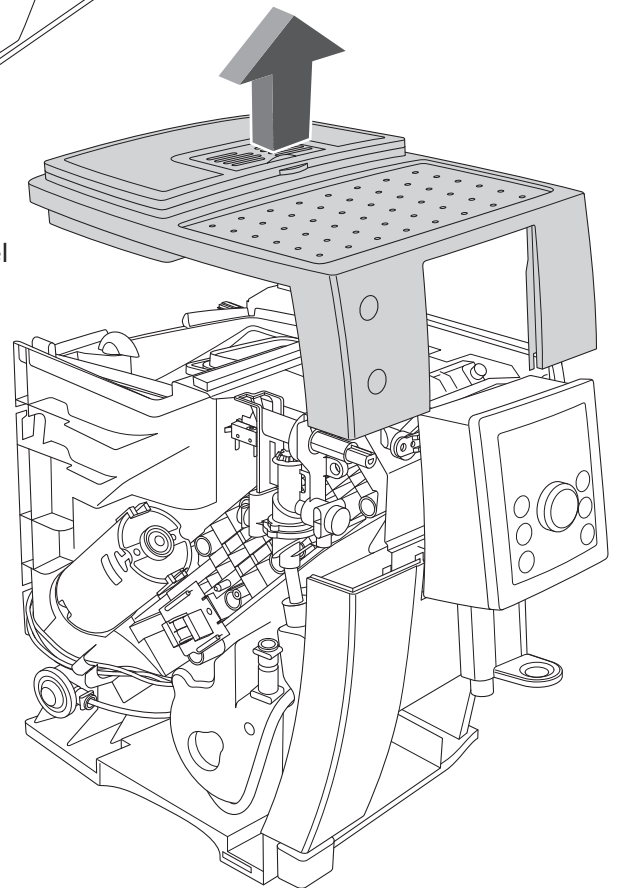
6.1 Take off plastic hook first



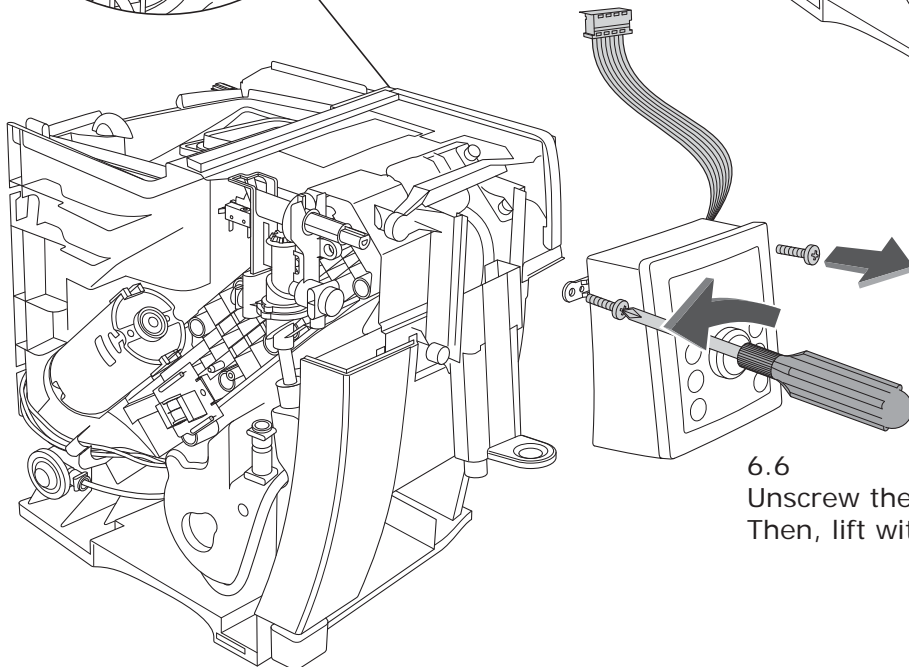
6.3 Unscrew the 4 indicated screws (2 on the back + 2 on the sides)

6.2 Take off knob and frother

6.4 Lift upper panel

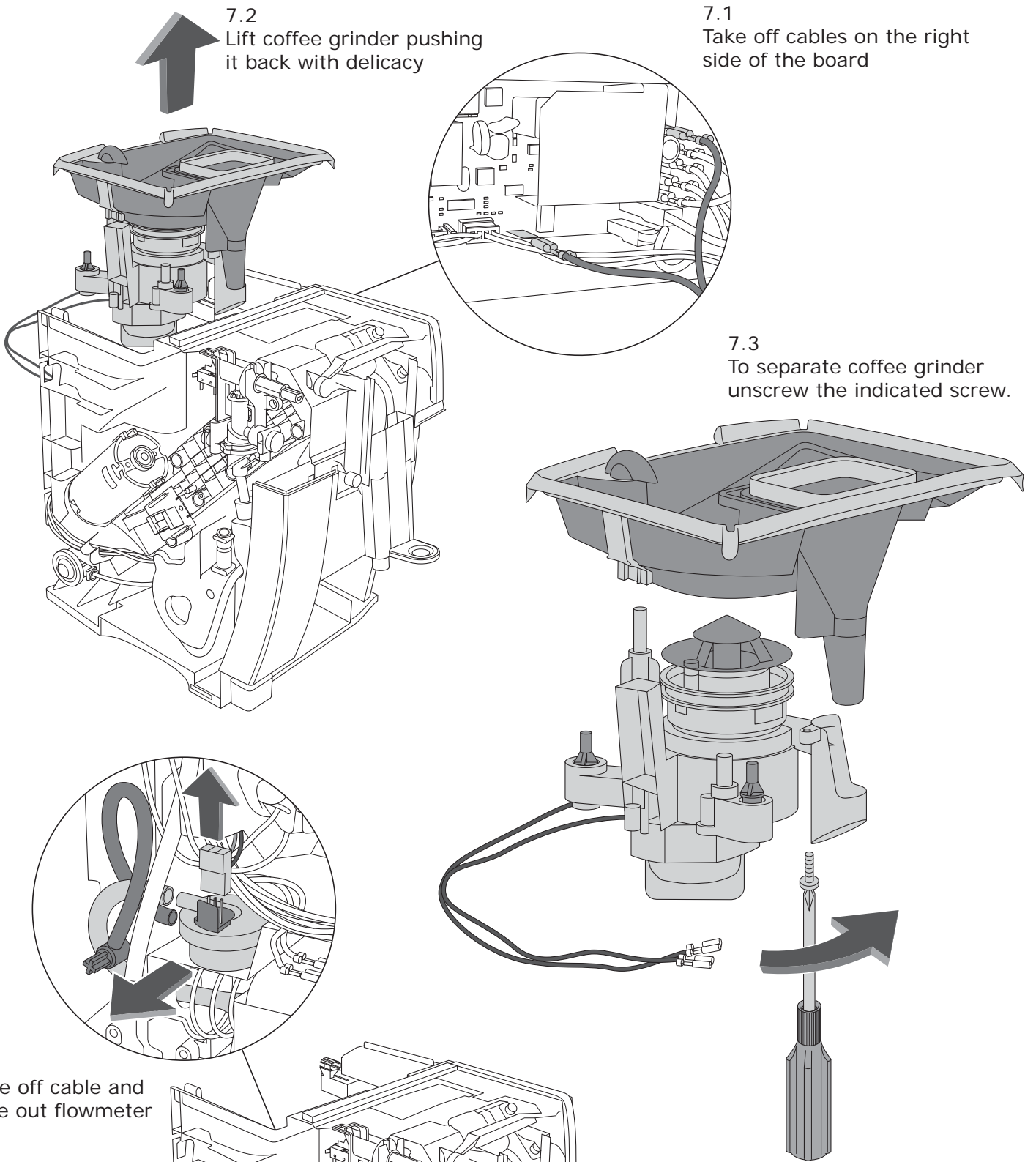


6.5 Take off cable

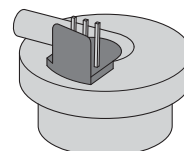


6.6 Unscrew the 2 indicated screws. Then, lift with care the Control Panel

Picture 7 - TO REMOVE COFFEE GRINDER

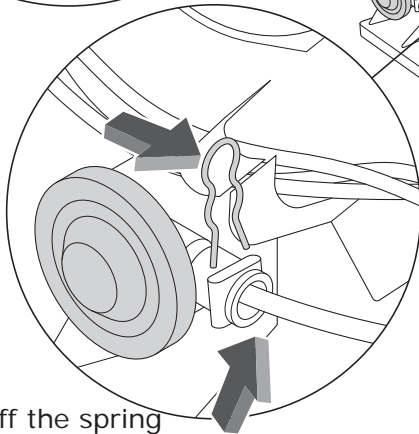
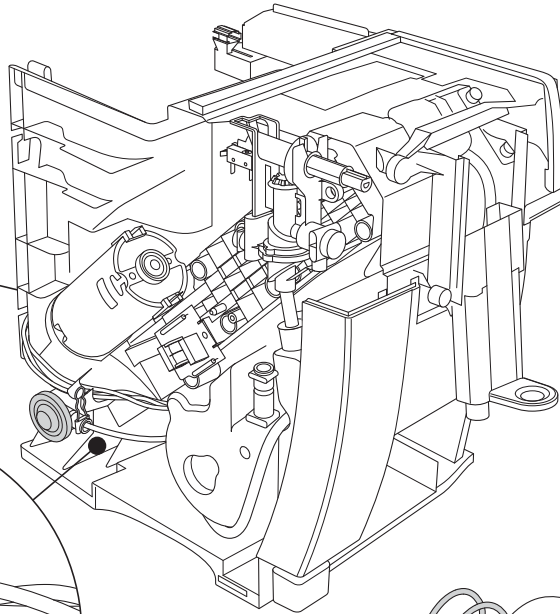
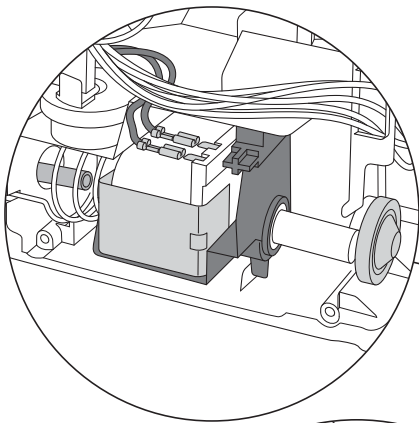


Picture 8 - TO REMOVE FLOWMETER

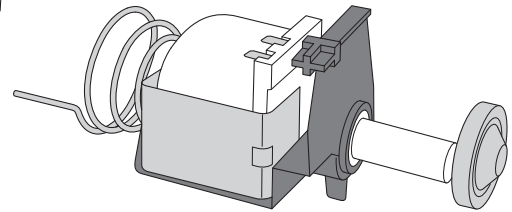


9.2
Take off pump

Picture 9 - **TO REMOVE PUMP**

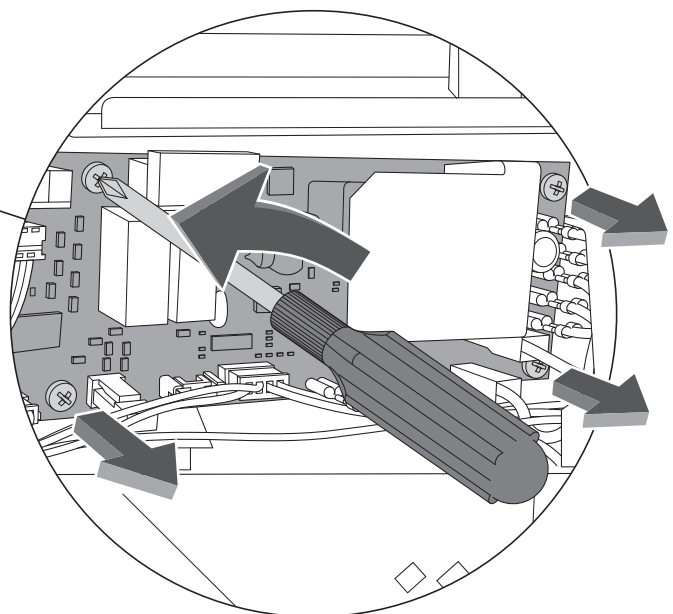
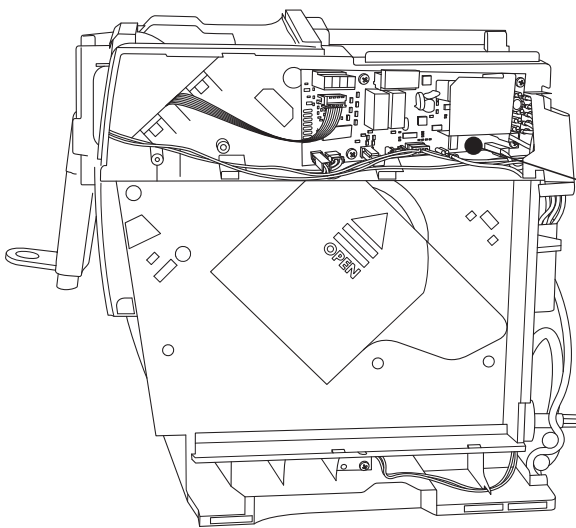


9.1
Take off the spring
and then the tube
Attention: Some water could come out
from the tube, since the water circuit is
emptying out



9.3
Attention: After you have taken off cables,
you will have to take off pump thermal protector.
Since it is glued, you will have to use a certain strength.
Remember to glue it again when you will reassemble it

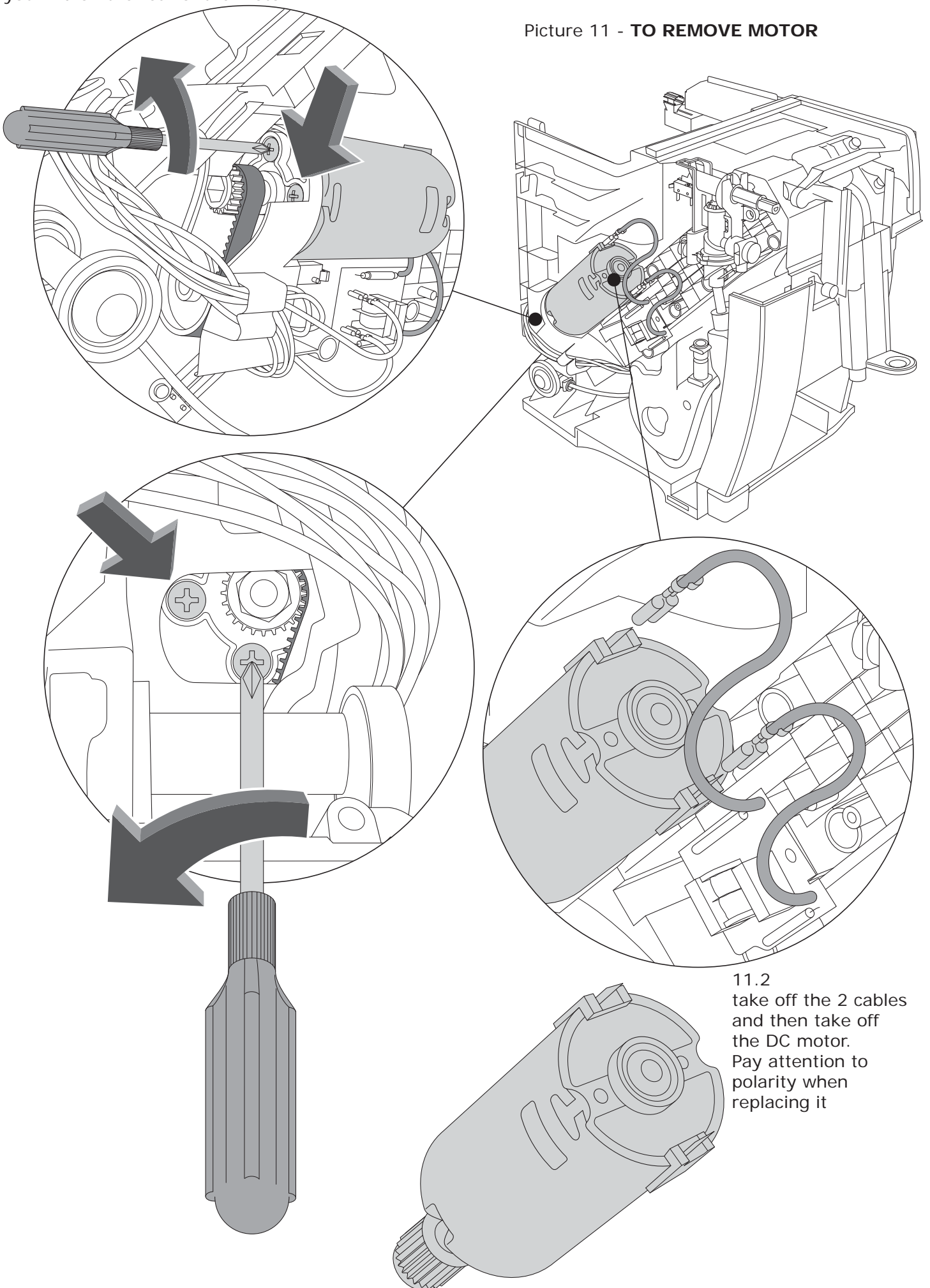
Picture 10 - **TO REMOVE BOARD**



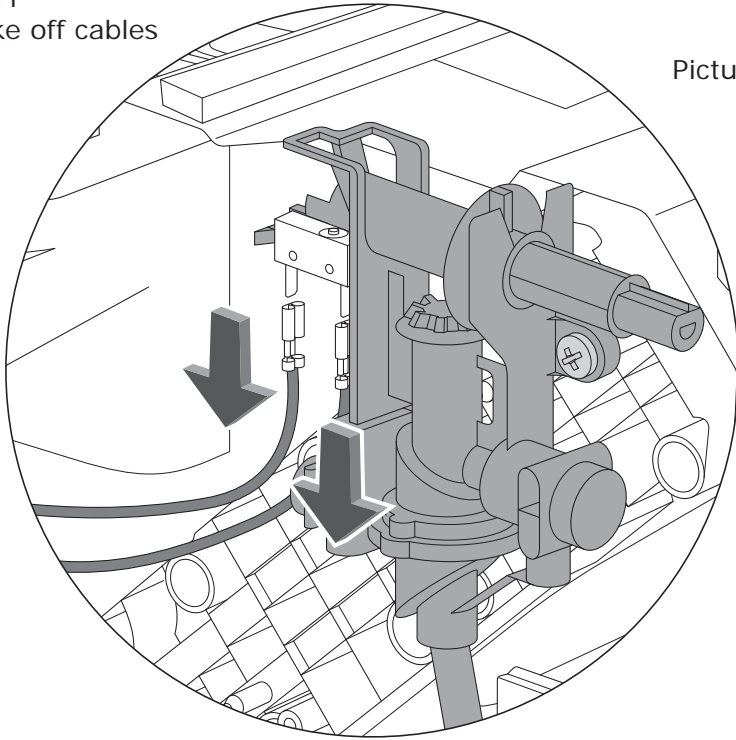
10.1
Take off the 4 indicated screws. After you have taken off cables, take out the board

11.1
Unscrew the 4 indicated screw
you find on the rear of the motor

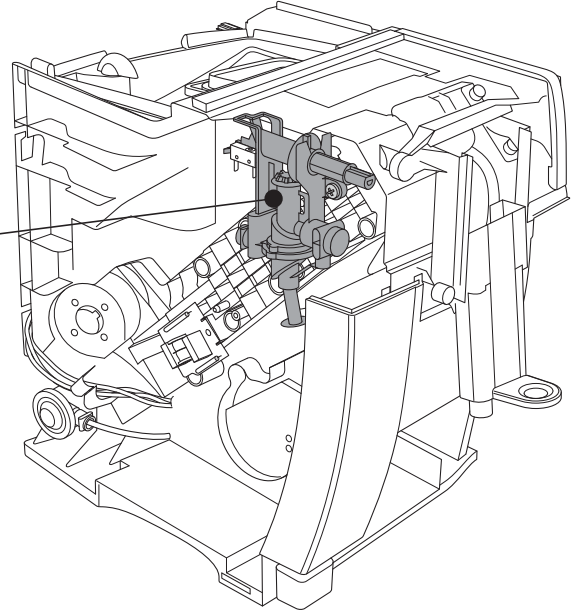
Picture 11 - **TO REMOVE MOTOR**



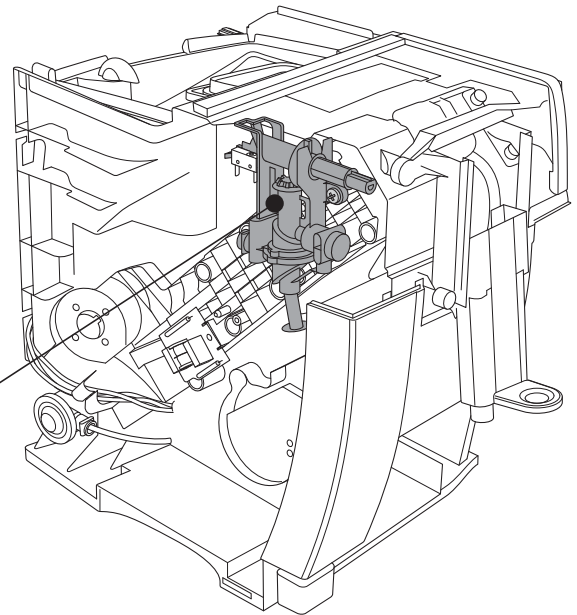
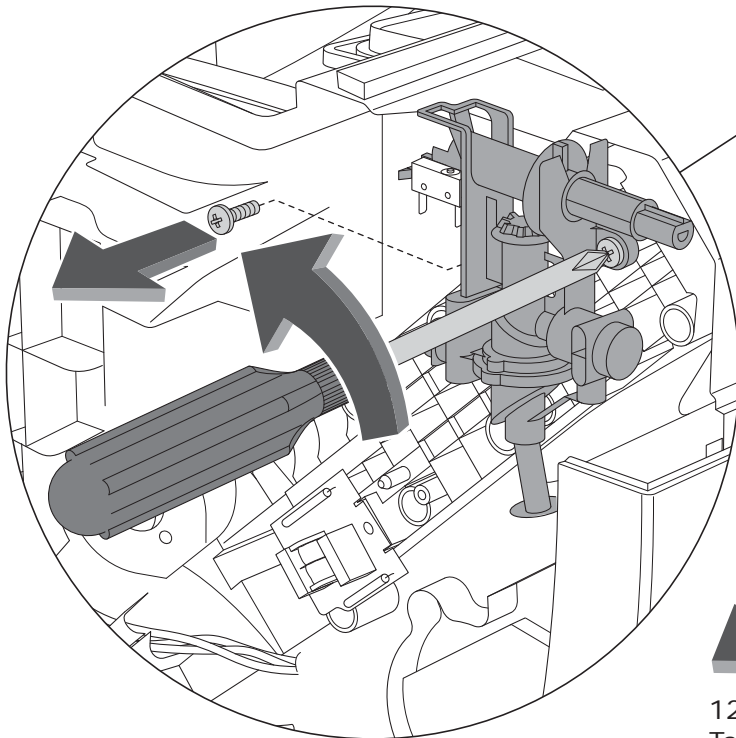
12.1
Take off cables



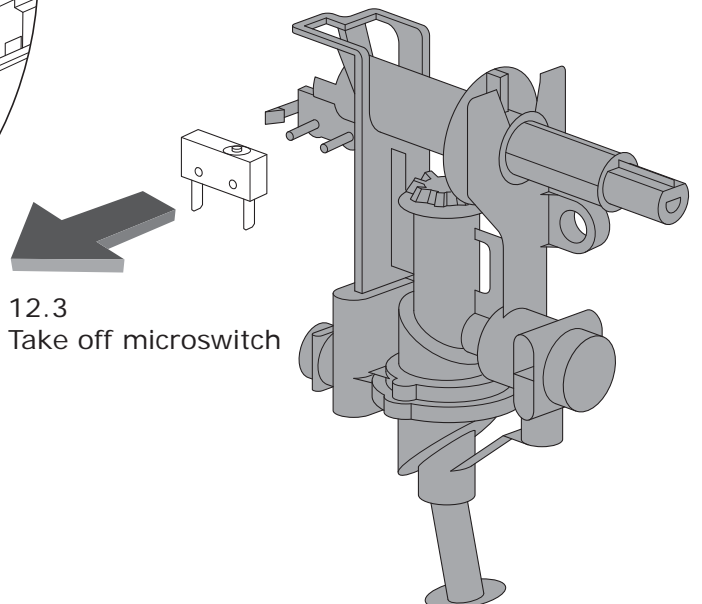
Picture 12 - TO REMOVE TAP STEAM/HOT WATER



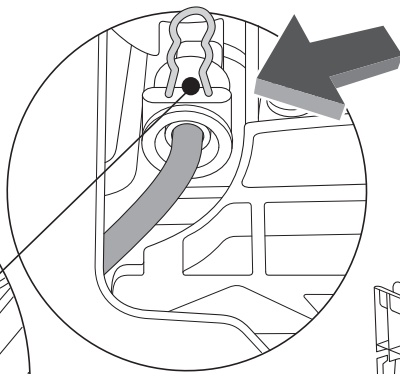
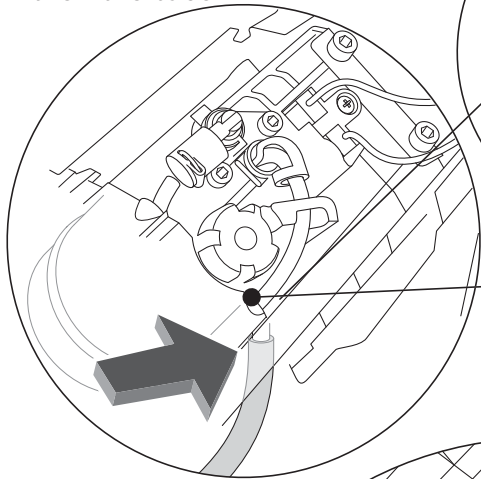
12.2
Unscrew the 2 indicated screws



12.3
Take off microswitch

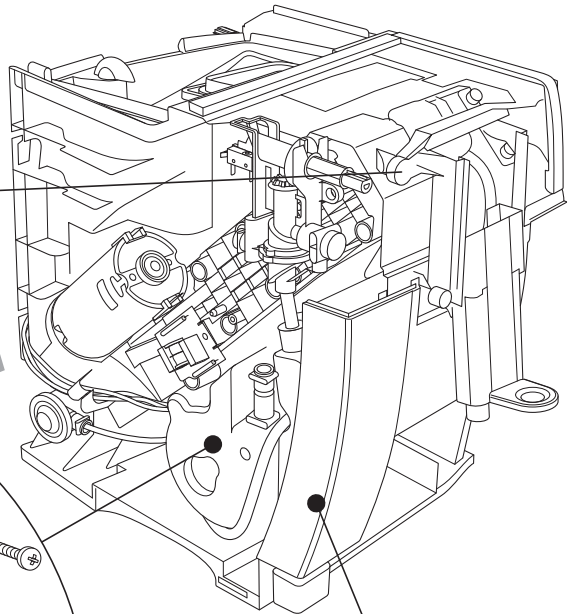
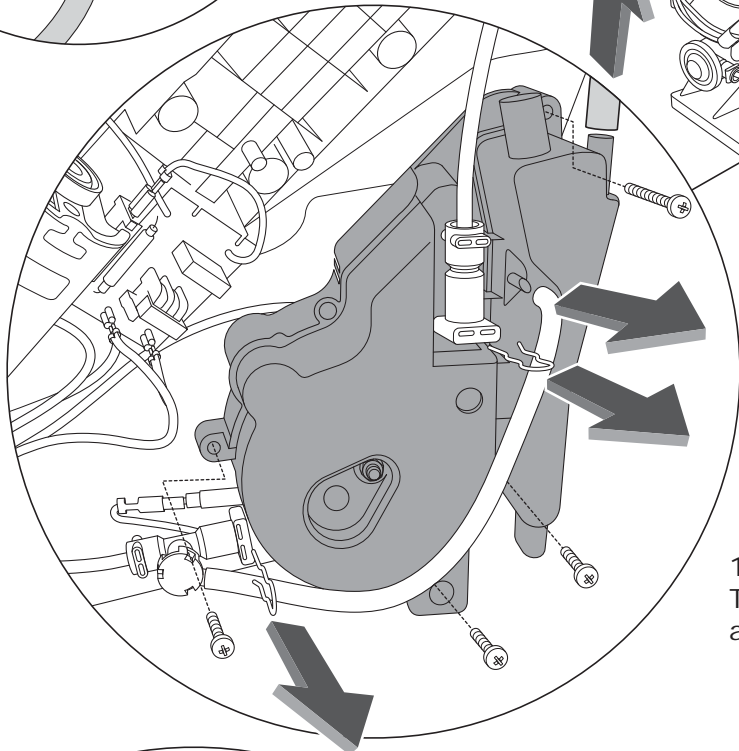


13.3
Take off the spring
indicated by the arrow and
then the tube



Picture 13 - **TO REMOVE BOILER**

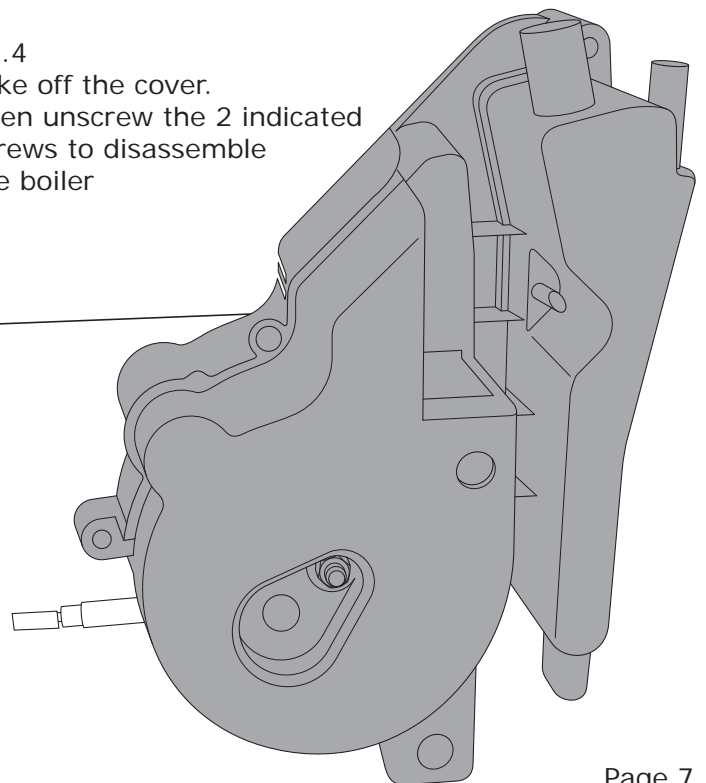
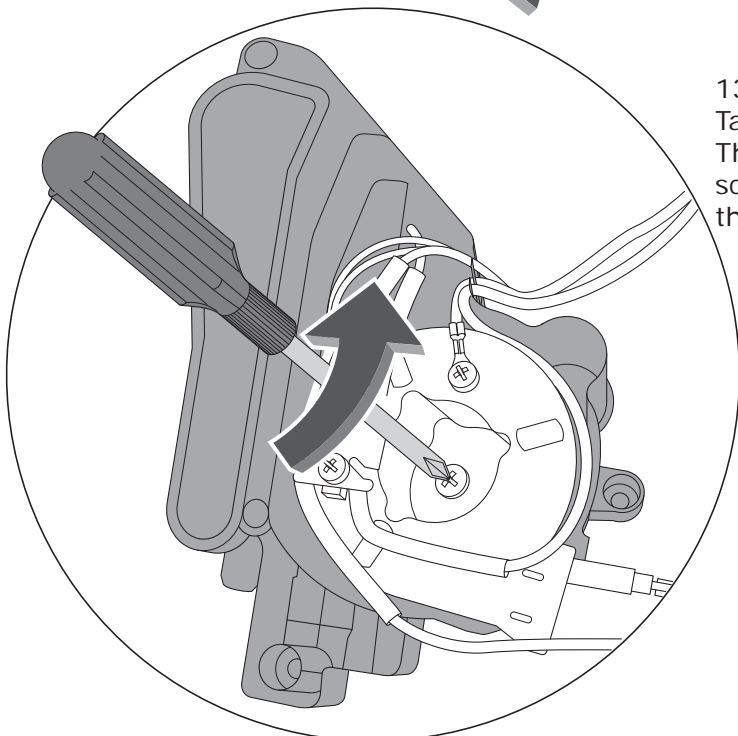
13.2
Take off the
tube



Attention: to take off the boiler,
push with delicacy the plastic panel

13.1
Take off the indicated 2 springs
and the 4 screws.

13.4
Take off the cover.
Then unscrew the 2 indicated
screws to disassemble
the boiler



Picture14 - TO REMOVE INFUSER KIT

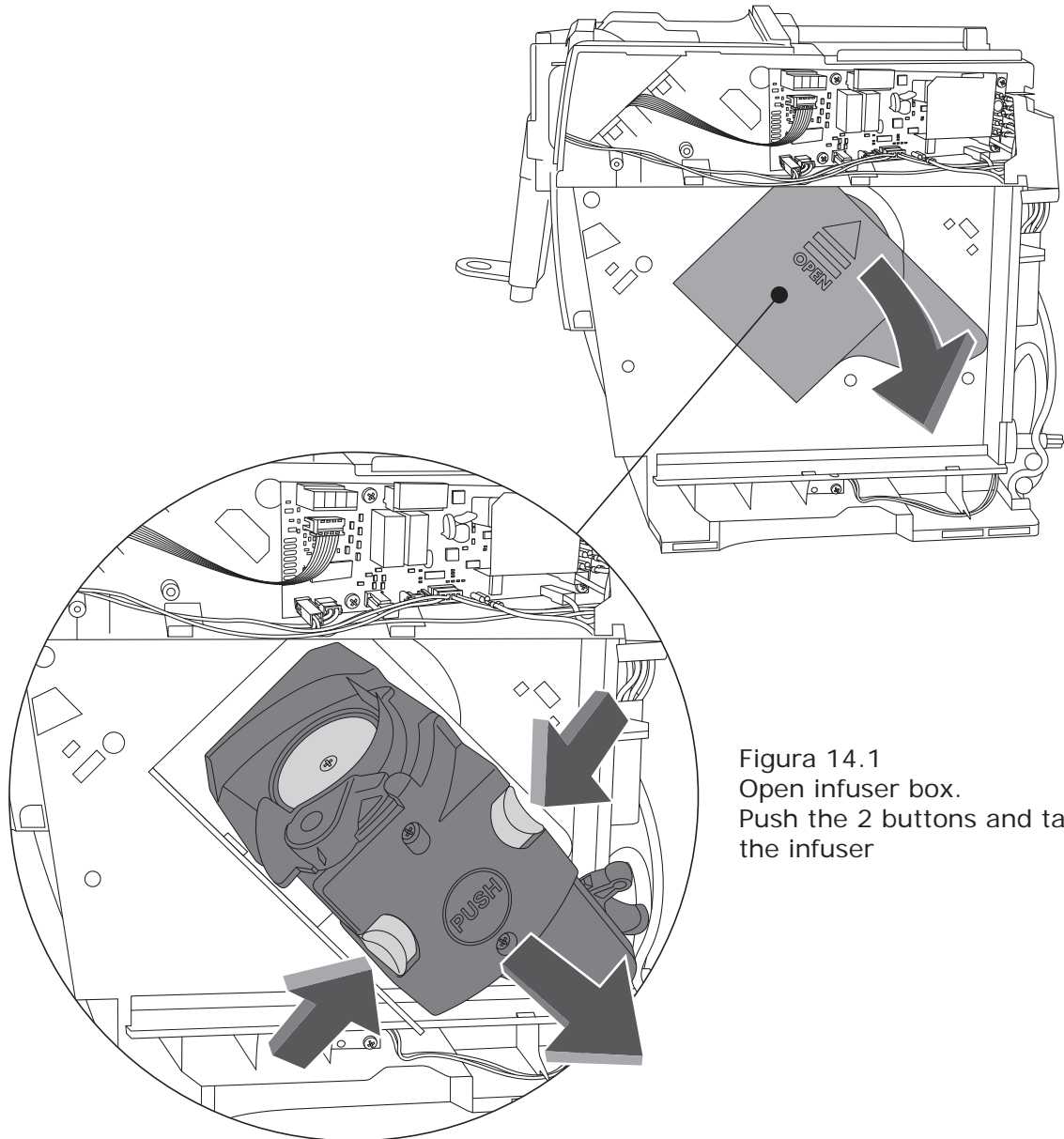
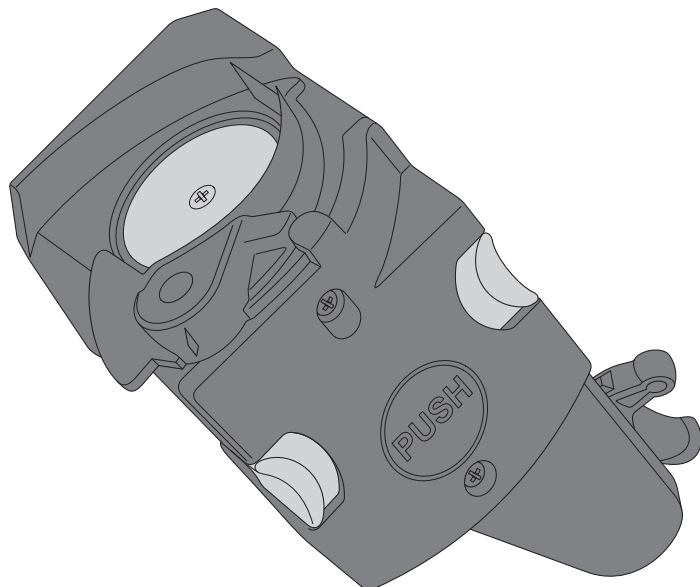
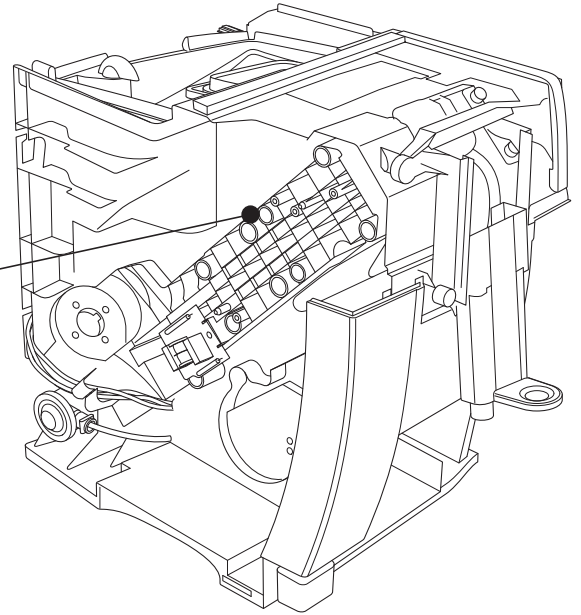
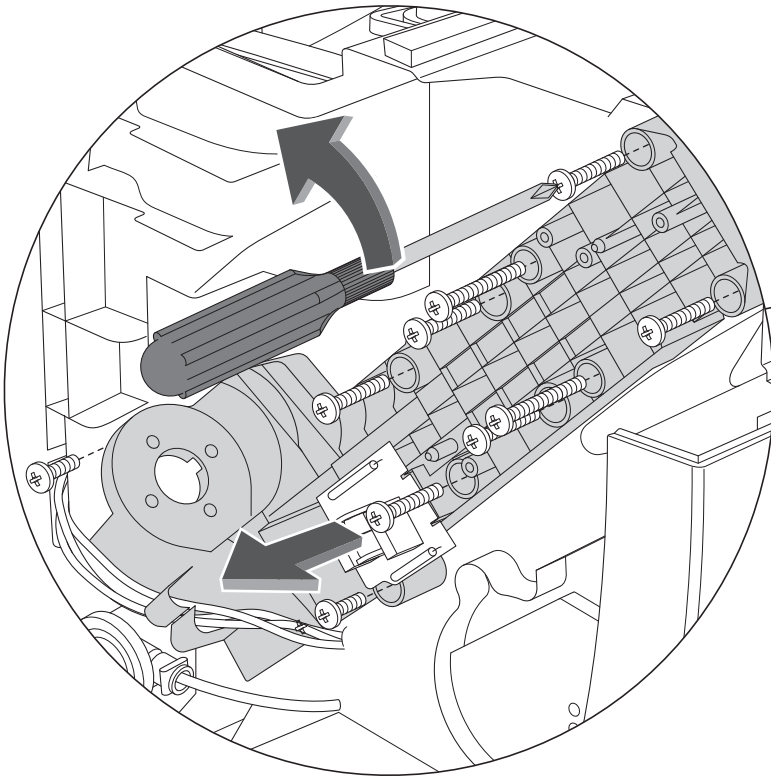


Figura 14.1
Open infuser box.
Push the 2 buttons and take out
the infuser

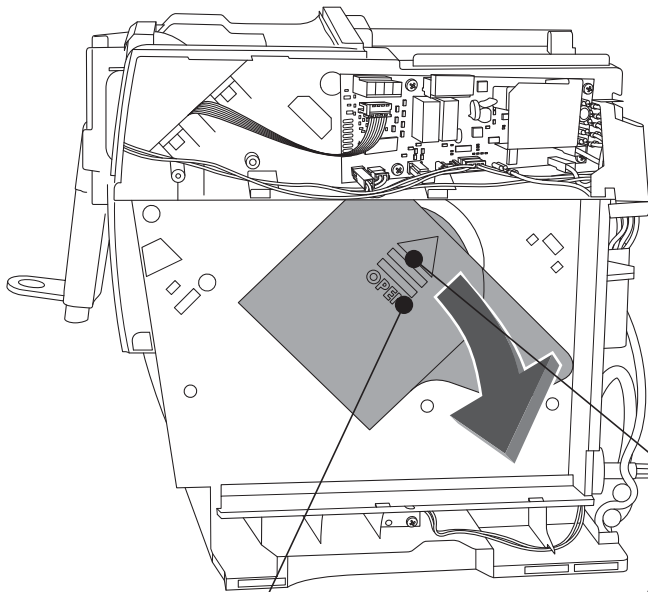


15.1
Unscrew the 10 indicated screws

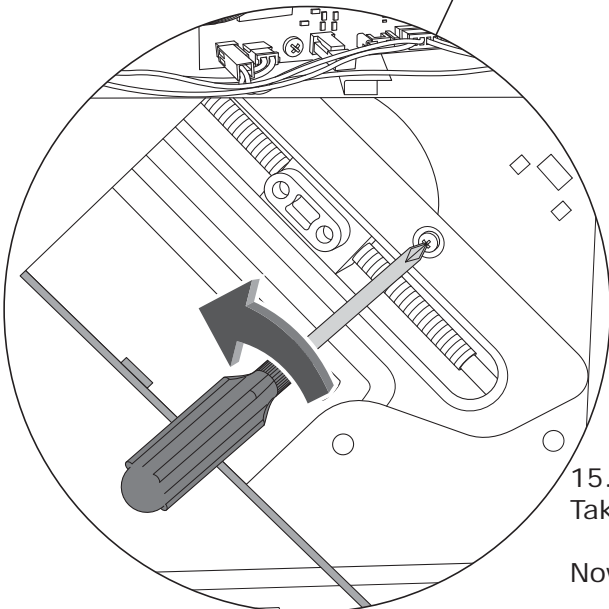
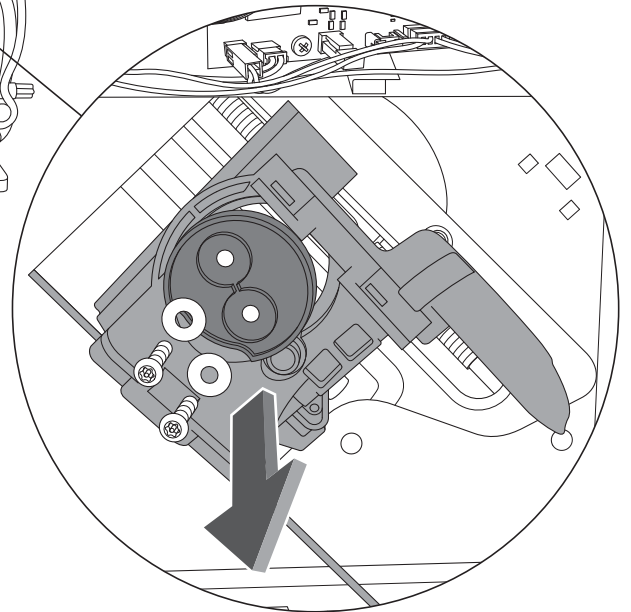
Picture 15 - **TO REMOVE TRANSMISSION KIT**



15.2
Open infuser box



15.3
Unscrew the 2 indicated screws
(Torx T20) and remove the slider

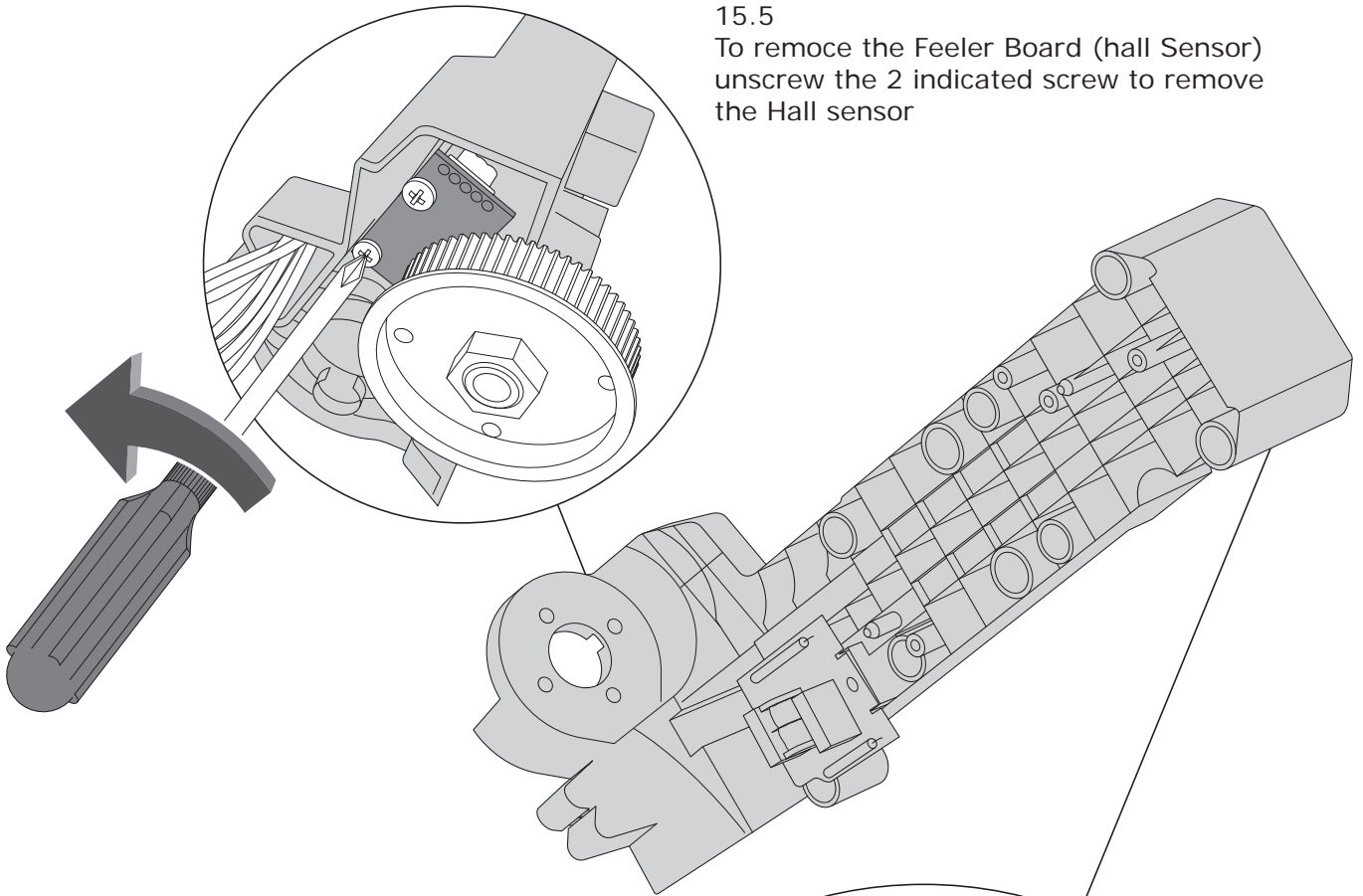


15.4
Take off the indicated screw

Now the TRASMISSION KIT is free and can be removed

15.5

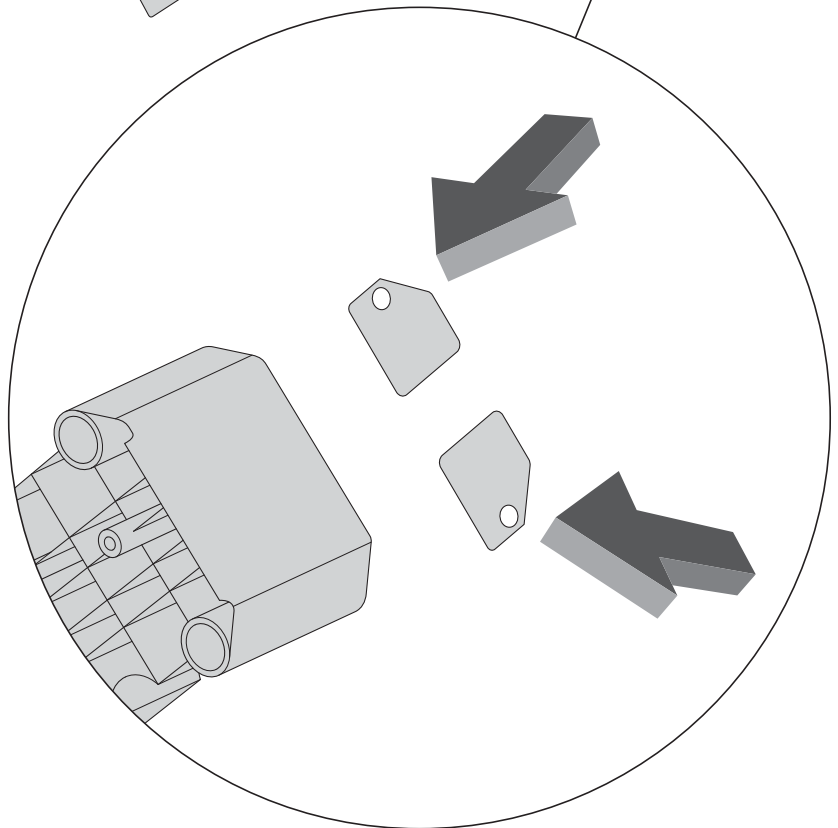
To remove the Feeler Board (hall Sensor) unscrew the 2 indicated screw to remove the Hall sensor



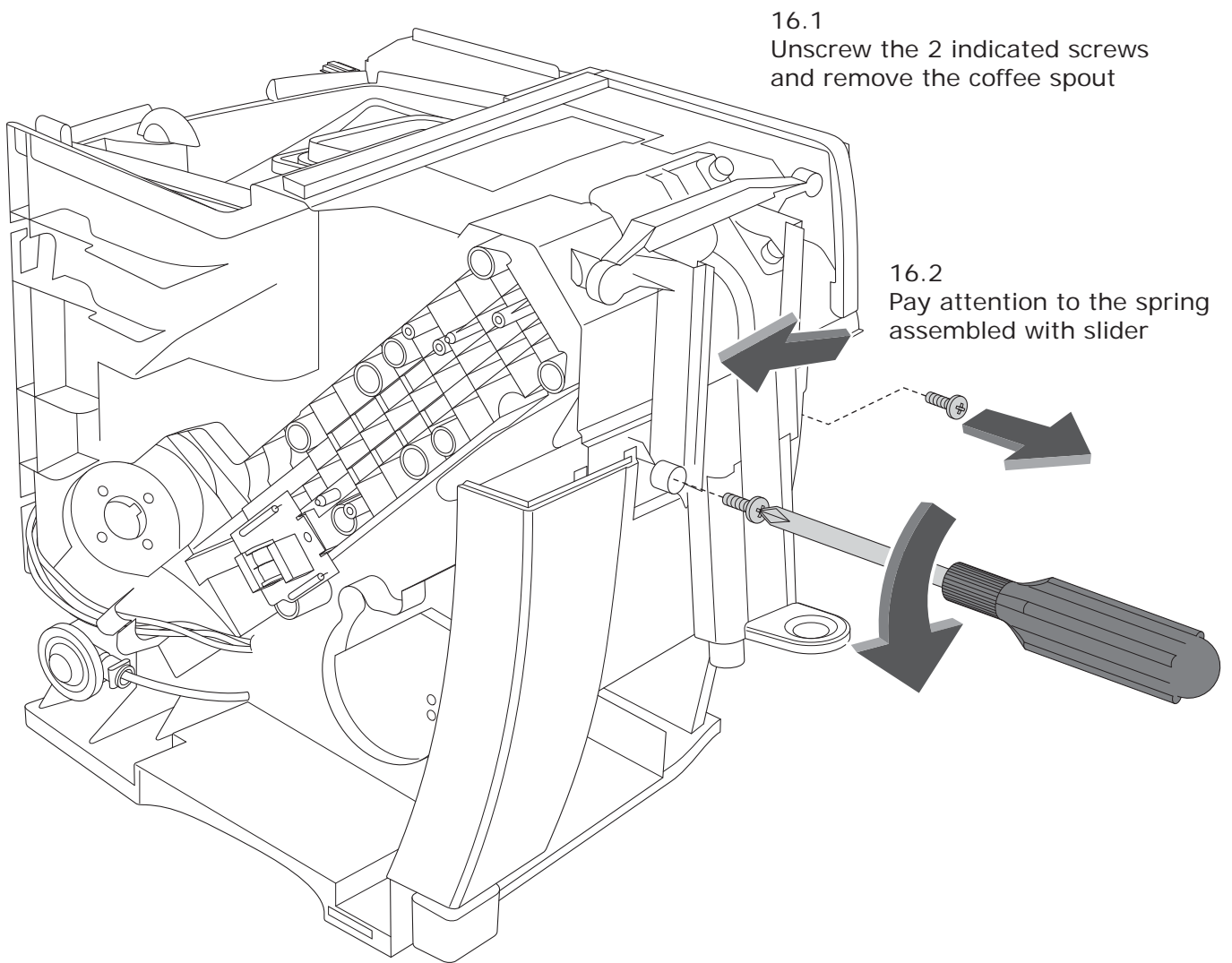
15.6

Pay attention, when you take off the plastic component, to the 2 indicated metal spacers

(ATTENTION: about metal spacers see Technical Info IT0181)



Picture 16 - **TO REMOVE COFFEE SPOUT**



Picture 17 - **TO REMOVE VALVE ASSEMBLY**
(see Technical Info IT0181)

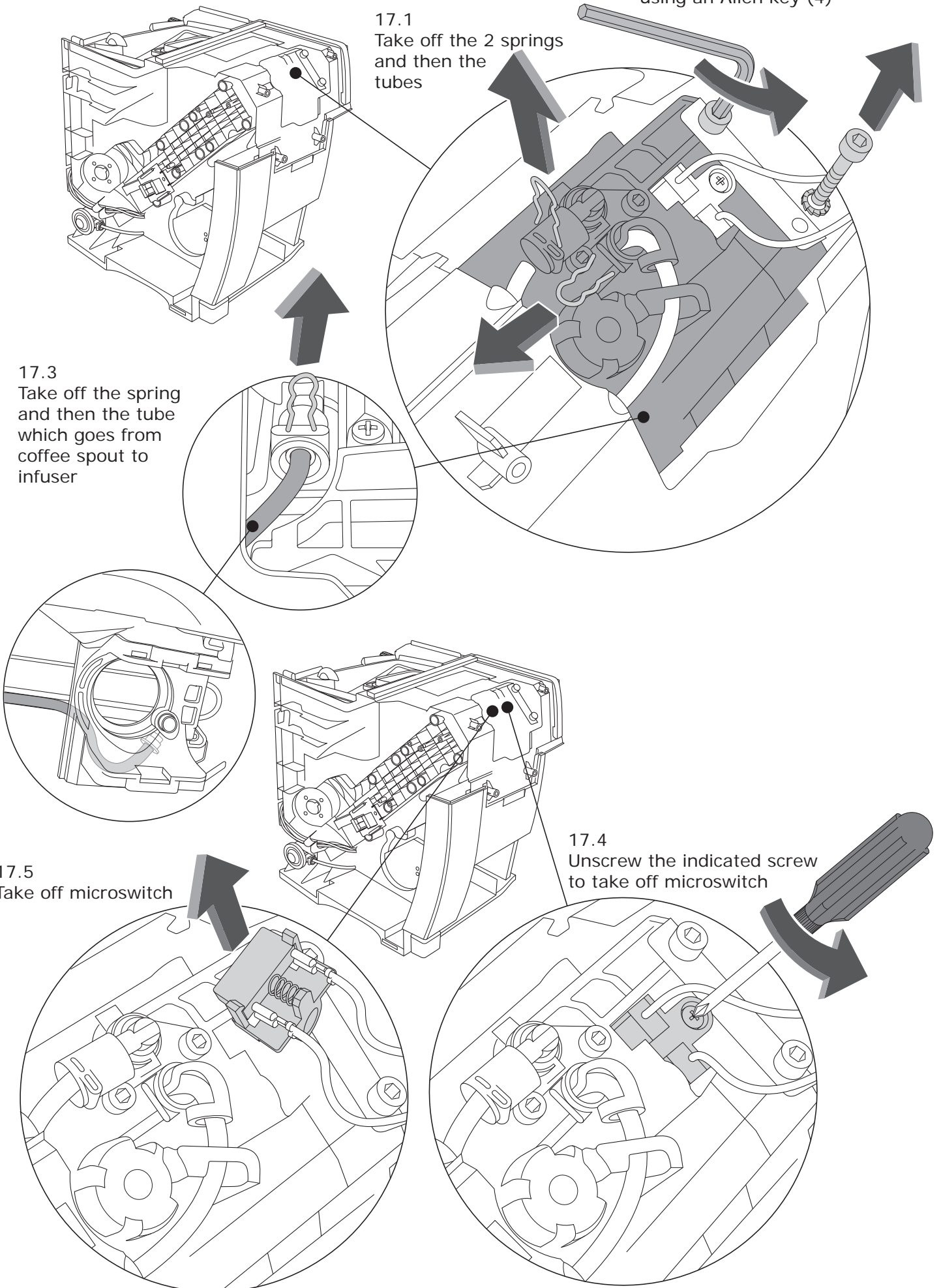
17.2
Unscrew the 2 indicated screws
using an Allen key (4)

17.1
Take off the 2 springs
and then the
tubes

17.3
Take off the spring
and then the tube
which goes from
coffee spout to
infuser

17.5
Take off microswitch

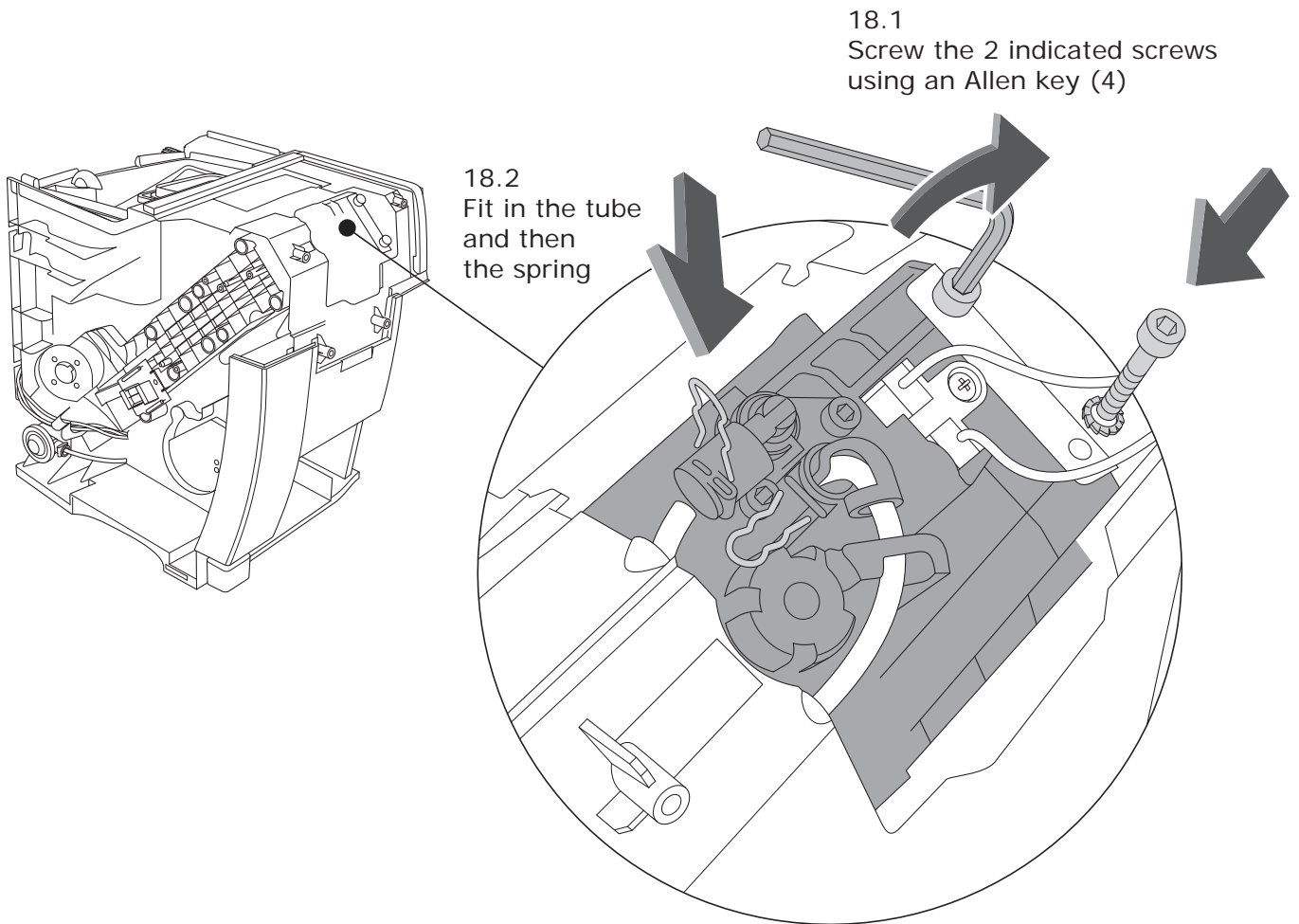
17.4
Unscrew the indicated screw
to take off microswitch



Picture 18 - HOW TO ALIGN VALVE

Lift the infuser up to touch the valve, without pushing with strength: it has only to be aligned to the valve.

Once you aligned it, fix the 2 screws (pic. 18.2) using an Allen key.

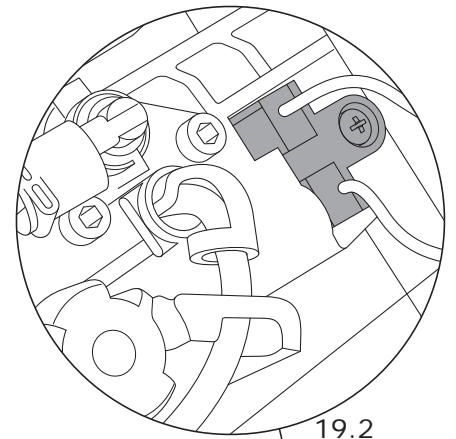
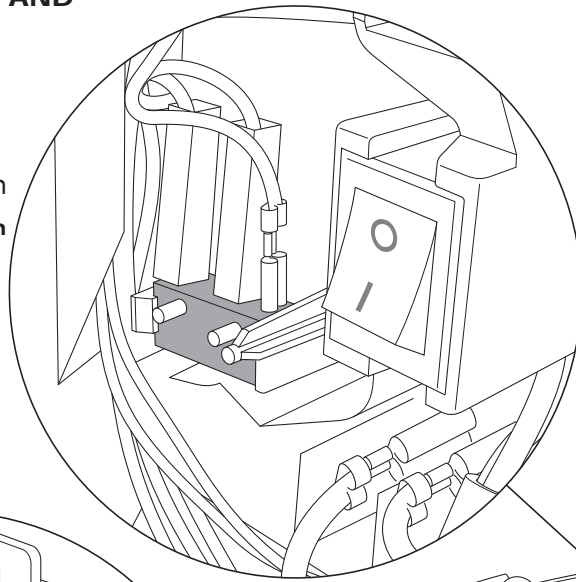


Picture 19 - MICROSWITCH AND WATER REED POSITION

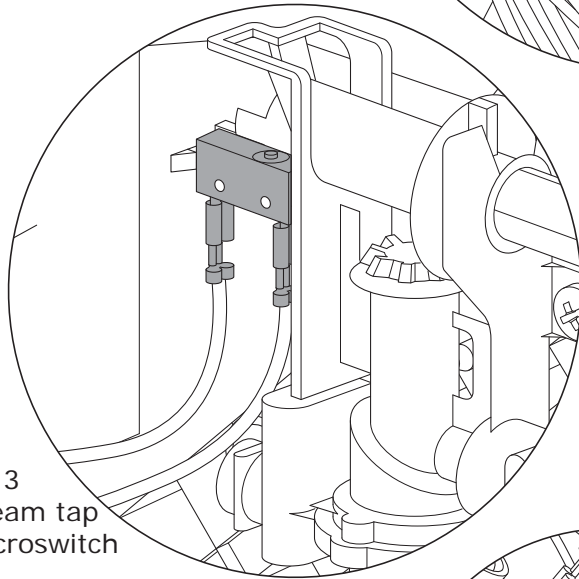
19.1
Water Tank
microswitch

ATTENTION: please, pay attention to never bypass microswitch. If you should do it infuser motor would be on

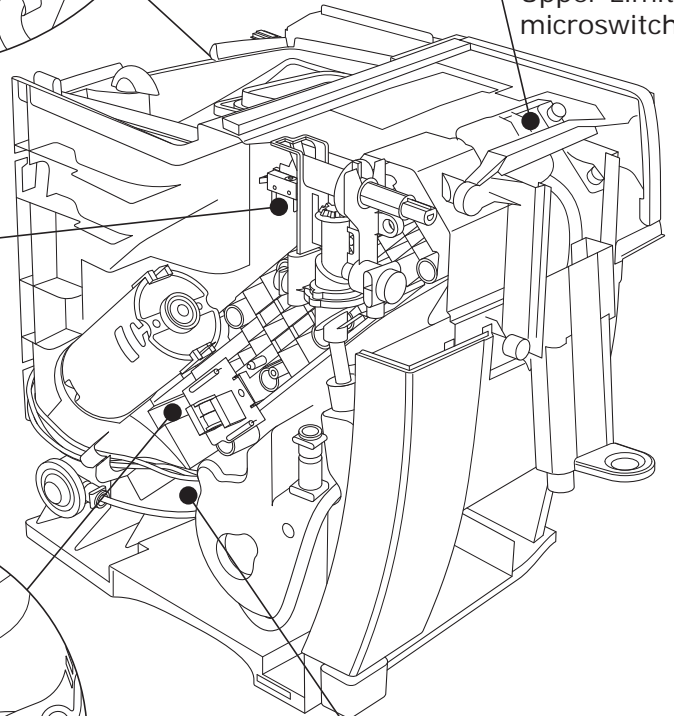
ATTENTION: Water Tank led, Waste container led and Steam tap led blink when micro are open



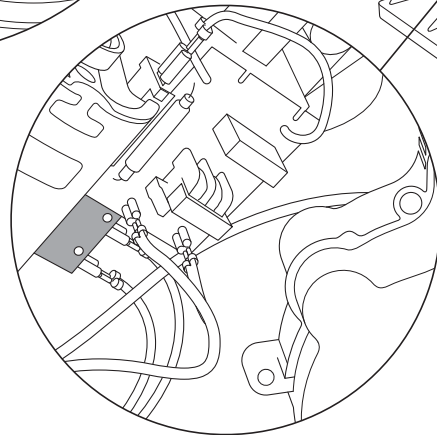
19.2
Infuser
Upper Limit
microswitch



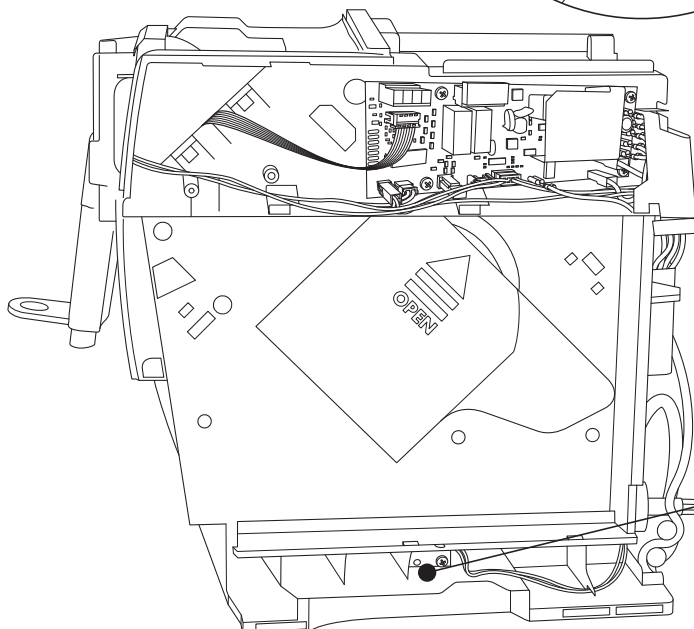
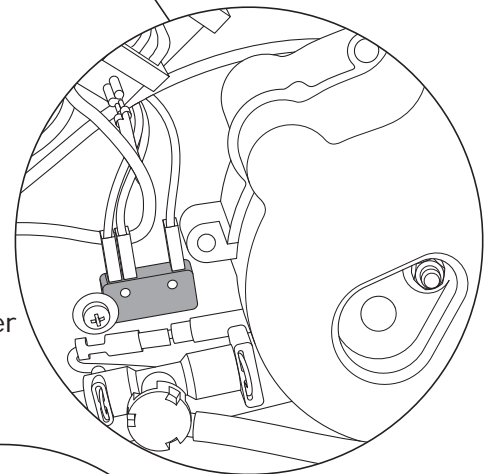
19.3
Steam tap
microswitch



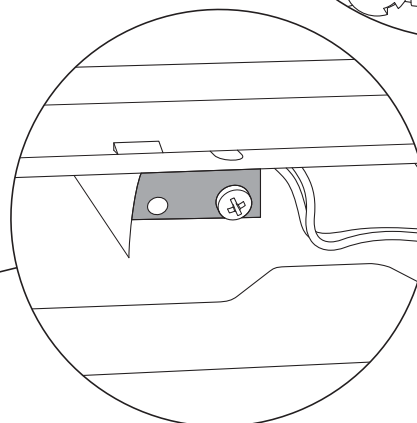
19.4
Infuser bottom limit
microswitch



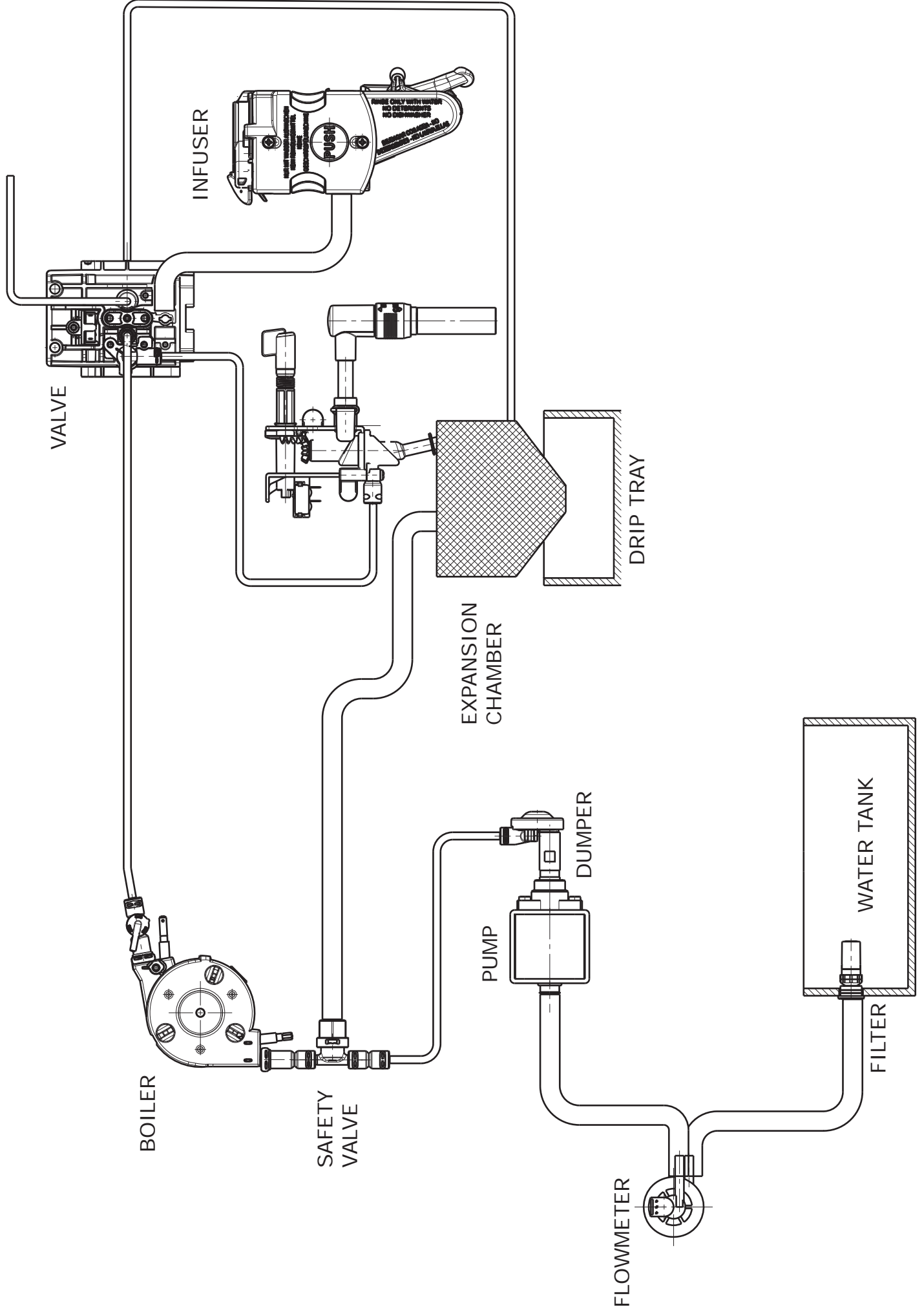
19.5
Waste container
microswitch



19.6
Reed switch
water tank









WATER CIRCUIT



TEST PROCEDURE FOR ECAM23.210 INTENSA




















TEST PROCEDURE	Pressing each icon below, we can manually check the devices:	
	icon	device
<p>Put Steam Tap on 0. Plug the machine ON. Press and hold: 1 Coffee + Steam buttons</p> <div style="text-align: center;">   </div> <p>Press On/Off Switch (position I)</p>		Coffe Boiler ON
		Grinder ON
		Motor UP, till "UPPER LIMIT Motor DOWN, till "BOTTOM LIMIT
		Water Pump ON
<p>NOTE: Release bttens when motor starts moving.</p>		

NOTE: Every led blinks when the microswitch is open

To EXIT the procedure, press On/Off Swich (position 0) or unplug the machine.

DISPLAY TEST PROCEDURE FOR ECAM23.210 INTENSA



DISPLAY TEST PROCEDURE	Pressing each icon the display will show following message	
<p>To enter the DISPLAY test: Plug the machine ON. Press and hold: 1 Coffee + Steam buttons</p> <div style="display: flex; justify-content: space-around; align-items: center;">   </div> <p>Press On/Off Switch (position I)</p>	icon	message
<p>Note: Release buttons some seconds after icons blinked.</p>		
		
		
		
		
		
		
	<p>Turning the knob, the display will show the bar increasing or decreasing.</p>	

NOTE: After display Test performing, you need to initialize the machine.

To EXIT the procedure, press On/Off Switch (position 0) or unplug the machine. Test procedure ends automatically 1 minute after you complete it.